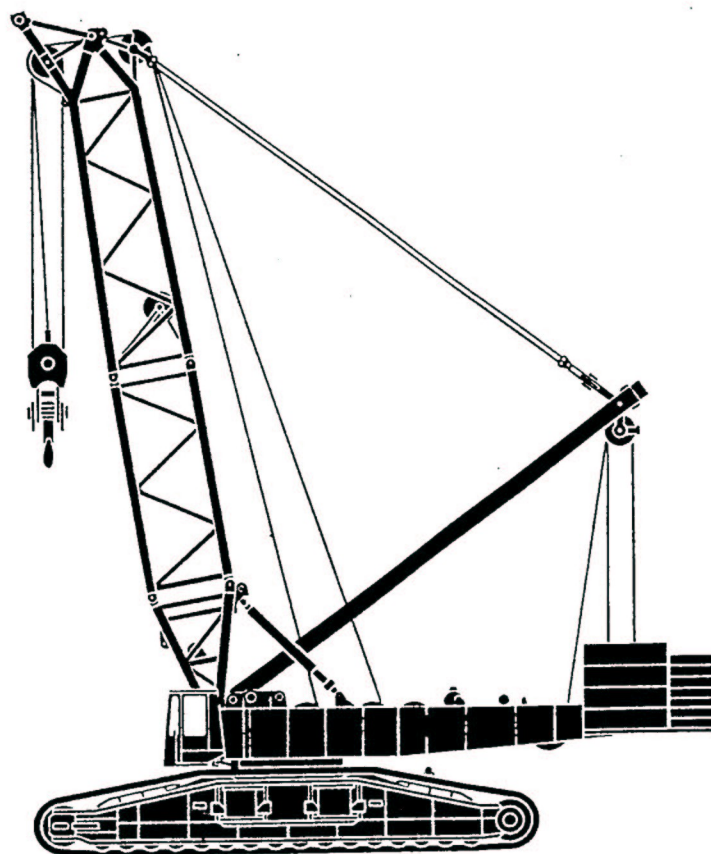
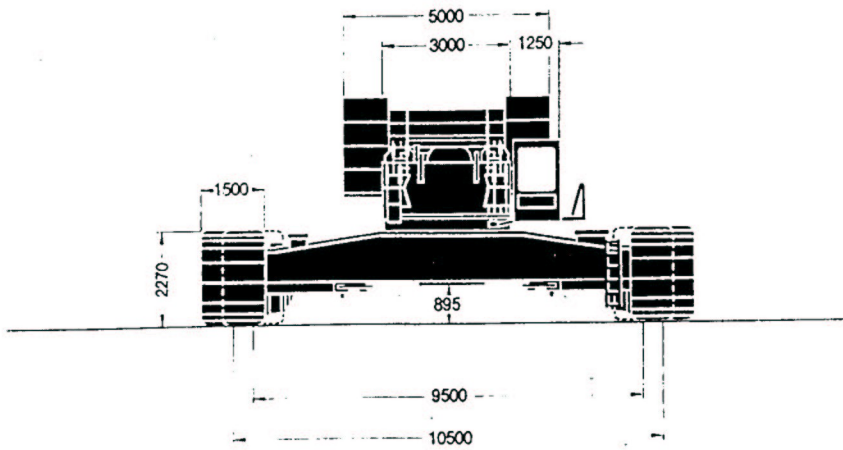
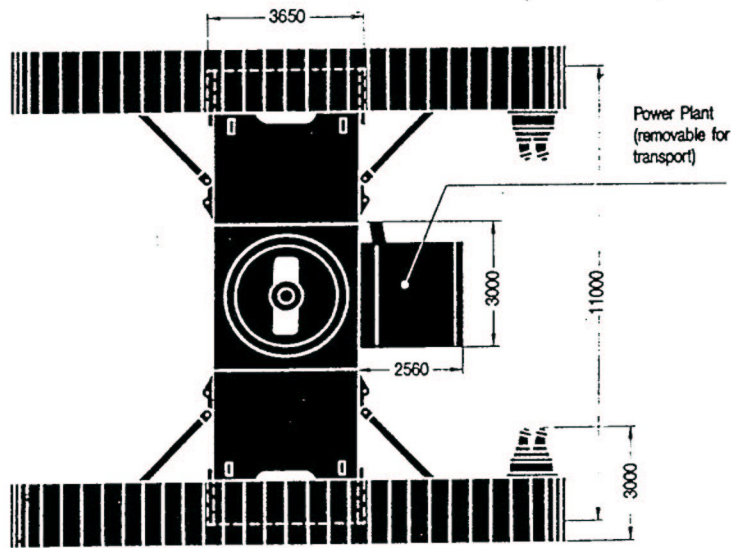
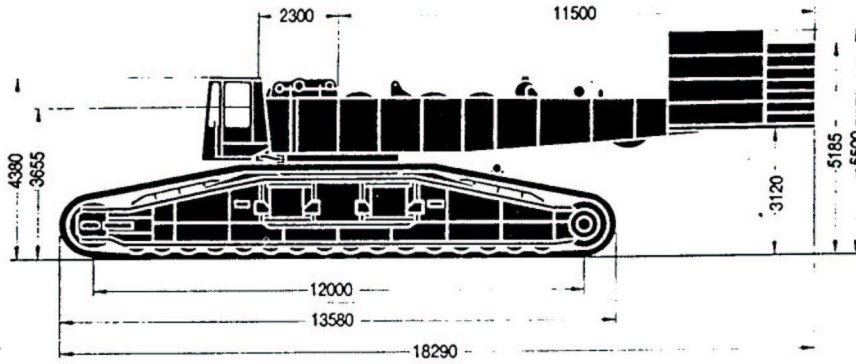

DEMAG CC4000

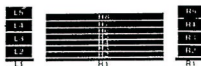
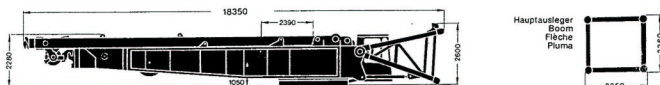


Dimensions

DEMAG CC4000



Weight of Counterweighted Machine with 18 m Boom	425 t
Superstructure (with 4 drums, foot section of boom and mast gantry)	77,8 t
Carbody	51,5 t
Crawler Side-Frames	2 x 72,3 t
Counterweight	140 t
Ground Pressure (based on a total weight of 425 t)	(1,18 kp/cm ²) 11,8 N/m ²



1110 x 2200 x 600
4 x 8,7 t = 34,8 t



1235 x 2200 x 600
2,3 t



1200 x 5000 x 285
3 x 8,8 t = 26,4 t



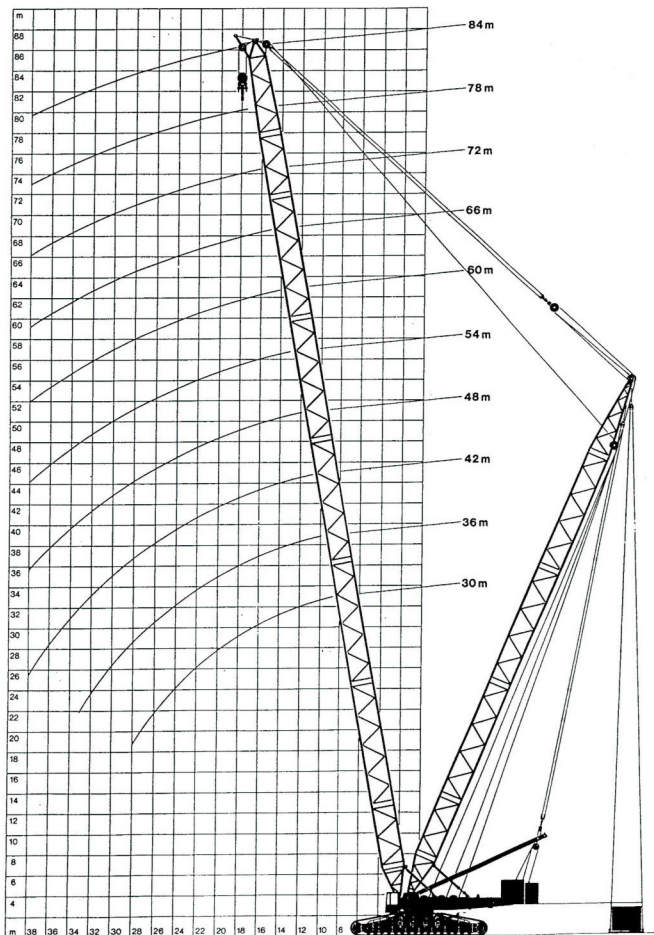
1200 x 5000 x 345
2 x 8,7 t = 17,4 t



1235 x 2200 x 600
2,3 t



1110 x 2200 x 600
4 x 8,7 t = 34,8 t



Superlift Capacities


DEMAG CC4000

10.5-m Track, 140-t Counterweight

75% (360°)

Main Boom		Mast Length		Superlift Counterweight (t)						
		Radius		0	50	100	150	200	250	
m	m	m	t	t	t	t	t	t	t	
30	with Heavy-Duty Hammer Head	30	8.5	*430	*500	*565	*635	*700	*760	
			10	*422	*477	*528	*582	*630	*674	
			12	*416	*478	*528	*582	*630	*674	
		16	10	*305	*350	*404	*450	*495	*540	
			12	*293	*342	*392	*440	*485	*530	
			14	*283	*333	*380	*428	*475	*520	
	Radius	18	*174	*220	*261	*302	*343	*383		
		20	*169	*217	*259	*301	*342	*383		
		22	*162	*212	*255	*298	*340	*382		
	30	with Universal-Head	30	10	*357	*420	*480	*540	*600	*660
				12	*352	*415	*475	*535	*595	*655
				14	*347	*410	*470	*530	*590	*650
16			10	*252	*293	*340	*388	*428	*460	
			12	*246	*289	*335	*382	*422	*455	
			14	*241	*285	*330	*378	*418	*450	
Radius		18	*171	*217	*263	*308	*353	*399		
		20	*166	*212	*258	*303	*348	*393		
		22	*161	*207	*253	*298	*343	*388		
54		with Heavy-Duty Hammer Head	30	10	*487	*550	*610	*670	*730	*790
				12	*479	*540	*600	*660	*720	*780
				14	*472	*533	*593	*653	*713	*773
	16		10	*357	*420	*480	*540	*600	*660	
			12	*352	*415	*475	*535	*595	*655	
			14	*347	*410	*470	*530	*590	*650	
	Radius	18	*249	*299	*350	*400	*450	*500		
		20	*243	*293	*343	*393	*443	*493		
		22	*237	*287	*337	*387	*437	*487		
	54	with Universal-Head	30	10	*487	*550	*610	*670	*730	*790
				12	*479	*540	*600	*660	*720	*780
				14	*472	*533	*593	*653	*713	*773
16			10	*357	*420	*480	*540	*600	*660	
			12	*352	*415	*475	*535	*595	*655	
			14	*347	*410	*470	*530	*590	*650	
Radius		18	*249	*299	*350	*400	*450	*500		
		20	*243	*293	*343	*393	*443	*493		
		22	*237	*287	*337	*387	*437	*487		
66		with Heavy-Duty Hammer Head	30	10	*587	*650	*710	*770	*830	*890
				12	*579	*640	*700	*760	*820	*880
				14	*572	*633	*693	*753	*813	*873
	16		10	*457	*520	*580	*640	*700	*760	
			12	*452	*515	*575	*635	*695	*755	
			14	*447	*510	*570	*630	*690	*750	
	Radius	18	*357	*420	*480	*540	*600	*660		
		20	*352	*415	*475	*535	*595	*655		
		22	*347	*410	*470	*530	*590	*650		
	66	with Universal-Head	30	10	*587	*650	*710	*770	*830	*890
				12	*579	*640	*700	*760	*820	*880
				14	*572	*633	*693	*753	*813	*873
16			10	*457	*520	*580	*640	*700	*760	
			12	*452	*515	*575	*635	*695	*755	
			14	*447	*510	*570	*630	*690	*750	
Radius		18	*357	*420	*480	*540	*600	*660		
		20	*352	*415	*475	*535	*595	*655		
		22	*347	*410	*470	*530	*590	*650		
72		with Heavy-Duty Hammer Head	30	10	*687	*750	*810	*870	*930	*990
				12	*679	*740	*800	*860	*920	*980
				14	*672	*733	*793	*853	*913	*973
	16		10	*557	*620	*680	*740	*800	*860	
			12	*552	*615	*675	*735	*795	*855	
			14	*547	*610	*670	*730	*790	*850	
	Radius	18	*457	*520	*580	*640	*700	*760		
		20	*452	*515	*575	*635	*695	*755		
		22	*447	*510	*570	*630	*690	*750		
	72	with Universal-Head	30	10	*687	*750	*810	*870	*930	*990
				12	*679	*740	*800	*860	*920	*980
				14	*672	*733	*793	*853	*913	*973
16			10	*557	*620	*680	*740	*800	*860	
			12	*552	*615	*675	*735	*795	*855	
			14	*547	*610	*670	*730	*790	*850	
Radius		18	*457	*520	*580	*640	*700	*760		
		20	*452	*515	*575	*635	*695	*755		
		22	*447	*510	*570	*630	*690	*750		
84		with Heavy-Duty Hammer Head	30	10	*787	*850	*910	*970	*1030	*1090
				12	*779	*840	*900	*960	*1020	*1080
				14	*772	*833	*893	*953	*1013	*1073
	16		10	*657	*720	*780	*840	*900	*960	
			12	*652	*715	*775	*835	*895	*955	
			14	*647	*710	*770	*830	*890	*950	
	Radius	18	*557	*620	*680	*740	*800	*860		
		20	*552	*615	*675	*735	*795	*855		
		22	*547	*610	*670	*730	*790	*850		
	84	with Universal-Head	30	10	*787	*850	*910	*970	*1030	*1090
				12	*779	*840	*900	*960	*1020	*1080
				14	*772	*833	*893	*953	*1013	*1073
16			10	*657	*720	*780	*840	*900	*960	
			12	*652	*715	*775	*835	*895	*955	
			14	*647	*710	*770	*830	*890	*950	
Radius		18	*557	*620	*680	*740	*800	*860		
		20	*552	*615	*675	*735	*795	*855		
		22	*547	*610	*670	*730	*790	*850		

* With 2 hook-blocks (lifting beam optional)

 10.5-m Track, 140-t Counterweight

75% (360°)

Radius m	Length of Main Boom														
	18 m	24 m	30 m	36 m	42 m	48 m	54 m	60 m	66 m	72 m	78 m	84 m	90 m	96 m	102 m
6	650**	-	-	-	-	-	-	-	-	-	-	-	-	-	-
7	570**	500*	-	-	-	-	-	-	-	-	-	-	-	-	-
8	500*	460*	440*	-	-	-	-	-	-	-	-	-	-	-	-
9	430*	425*	420*	420*	419*	-	-	-	-	-	-	-	-	-	-
10	380	375	375*	373*	371*	370*	360*	314*	-	-	-	-	-	-	-
12	307	305	303	302*	300*	299*	298*	296*	266*	232*	200*	-	-	-	-
14	258	256	254	253	251*	250*	248*	247*	246*	226*	199*	176*	152*	134*	110
16	222	220	218	217	215	214*	212*	211*	210*	208*	198*	174*	151*	132*	110
18	194	192	190	189	188	186	185*	184*	182*	181*	180*	172*	148*	130*	109
20	-	164	163	162	160	160	159	158	157*	156*	155*	155*	145*	128*	108
22	-	144	142	141	140	139	138	137	136	135*	134*	134*	133*	125*	106
24	-	-	126	125	123	122	121	120	119	118	117*	117*	116*	115*	104
26	-	-	113	112	110	109	108	107	106	105	104	103*	103*	102*	101
28	-	-	102	101	99	98	97	96	95	94	93	92	91*	91*	90
30	-	-	-	92	90	89	88	87	86	85	84	83	82	82	81
34	-	-	-	-	76	75	74	72	71	70	69	69	68	67	66
38	-	-	-	-	65	64	63	61	60	59	58	58	57	56	55
42	-	-	-	-	-	56	54	53	52	51	50	49	48	47	46
46	-	-	-	-	-	-	48	46	45	44	43	42	41	40	39
50	-	-	-	-	-	-	-	41	39	38	37	36	35	34	33
54	-	-	-	-	-	-	-	-	36	35	34	32	31	30	29
58	-	-	-	-	-	-	-	-	-	31	30	28	27	26	25
62	-	-	-	-	-	-	-	-	-	-	26	25	24	22	21
66	-	-	-	-	-	-	-	-	-	-	-	22	21	19	18
70	-	-	-	-	-	-	-	-	-	-	-	19	18	17	15
74	-	-	-	-	-	-	-	-	-	-	-	-	16	14	13
78	-	-	-	-	-	-	-	-	-	-	-	-	-	12	11
82	-	-	-	-	-	-	-	-	-	-	-	-	-	-	9

** Only with heavy-duty hammer head and 2 x 400t hook-block.

* Double hook-block required.

Main-boom capacities for 9.5-m track available on request.

Additional combinations and lifting capacities on request.



Crane Capacity Notes

Gross capacities do not exceed 75% of tipping load and are in conformance with DIN 15019.2 (test load = $125 \times$ lifting load + $0.1 \times$ dead weight of boom reduced to boom point).

The weight of hook block and all other load-handling accessories is considered part of the load, and suitable allowance for them should be made.

Crane with maximum length of boom can still operate safely up to a

Wind Pressure of 60 N/m^2

and a Wind Speed of 9.8 m/s

Wind Surface of Load 1 m^2 Δ load

All capacities above the parting lines in the charts depend on a firm level, uniformly supporting surface. Shorter boom lengths and lower capacities apply to sloping positions and travel over uneven ground.

Loads suspended from the Fly Jib are not allowed to be travelled into position, and limitations on boom length must be observed when travelling without a load over uneven ground.

Consult operation manual for further particulars and higher wind speeds.

While every care has been taken in the preparation of the ratings given in this leaflet, and all reasonable steps have been taken to check the accuracy of the information, Decalift cannot accept responsibility for any inaccuracy in respect of any matters arising out of, or in connection with the use of these tables.